

MEDITECH NEWS April 2006

FREEZERS



- **CRYOLOGIC freezers** are the **most economical, accurate and reliable freezers** available in North America.
- They are priced around **can\$ 12000.00 a unit depending on accessories.**
- They are precision engineered for cryopreservation of biological specimens with around 16 preprogrammed cycles and more that could be programmed with the cryogenesis software.
- Each consists of a temperature controller, cryochamber, and cryobath.
- It is very important to secure a back up unit in case of emergency as well as a service contract with Biogenics.
- **Call us and we will be very happy to send you a quote.**

SEMEN ANALYZER MACHINES



- **Microoptics SCA Semen analyzers** are the most economical and yet accurate analyzer on the market.
- For around **Can\$ 20000.00** you can acquire a reliable semen analyzer allowing you full Concentration and Motility Analysis
- **For under Can\$ 32000.00, Microoptics SCA complete Morphology and Concentration System will allow you on top the above to study Sperm Morphology**

Capture of high resolution images (768x576)

Real time visualization of sperm tracks and data

Sequence of 25 images to calculate velocity

Automatic selection of the sperm

Visualization of sperm motion trajectories

Process of data in real time (2 s)

Elimination/addition of sperm is possible

Sperm and other cells area calculation

Possibility to include new definitions on the data

Storage and issue of personalized reports including images, and graphics

Detailed values of the following parameters:

- Concentration (M/ml), total ejaculated
- Total number of static sperm (type D)
- Total number of motile sperm (types A, B and C)

VCL, VCL, VSL, VAP, LIN, STR, WOB, ALH,
BCF

- Sperm head: Size (length, width, area, perimeter), Form (elongation, ellipticity, roughness, regularity)
- Acrosome: Percentage of the head area, Grey level of acrosome and post-acrosome regions
- Midpiece: Maximal width, area, insertion distance respect to longitudinal head axis, angle between longitudinal axis of head and midpiece
- Classification: Automatic classification into sperm morphology categories for several species

TABLE TOP INCUBATORS G85 AND G185



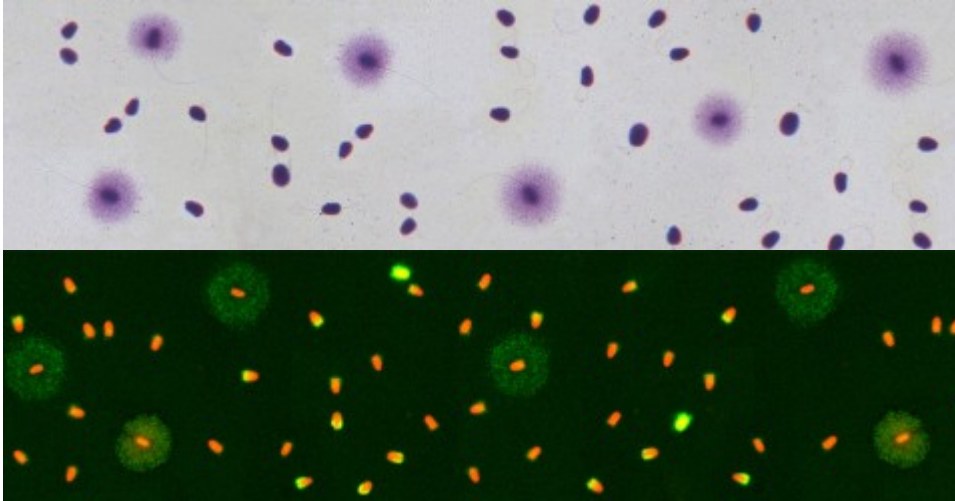
- K-SYSTEMS CO2 Mini Incubator optimizes culture conditions.
- The desired temperature and CO2 level inside the mini incubator is quickly re-established, primarily due to the small size of the culture chambers.
- By using the KSYSTEMS CO2 Mini Incubator the number of openings of the large CO2 incubators is reduced.
- The K-SYSTEMS CO2 Mini Incubator is ideal for gamete and embryo storage during micromanipulation or as an extra mini incubator placed inside laminar flow cabinets.

The **NEW G185 MINI INCUBATOR** will soon be available at ESHRE



- The Vitro-Cube is a desktop humidified Tri-gas and CO₂ incubator used for maintaining an optimal environment for the development of embryos.
- The Vitro-Cube has a capacity of up to 20 NUNC or FALCON 4-well culture dishes in 10 separate compartments each with its own lid.
- The Vitro-Cube has one large-sized compartment that can hold test tubes and culture media.
- The Vitro-Cube has a separate gas control for supply to each compartment. The gas supply to a compartment can thus be shut off when not in use without interfering with the gas supply to the active compartments.
- The top of the Vitro-Cube containing all the compartments is detachable and autoclaveable thus making cleaning easy.

SEMEN DNA FRAGMENTATION TEST



- The SPERM-HALOMAX® kit series from CHROMACELL SL bursts into the market as a pioneering product for the analysis of DNA fragmentation levels in spermatozoa both in domestic and experimental animals.
- SPERM-HALOMAX® is a simple test to study DNA fragmentation levels in spermatozoa.
- The method is a variant of the Sperm Chromatin Dispersion protocol currently employed in humans (SCD; Fernández et al., 2003. J. Androl. 24: 49-66).
- This new methodology provides a simple way to distinguish, even at low magnification, spermatozoa with and without fragmented DNA, giving high quality images both under fluorescence and light microscopy.

PCSI DISH FOR SPERM SELECTION (for research only)



- Based on Hyaluronan Binding. Bound sperm= Best sperm for ICSI.
- Dr. Gabor Huszar's Pioneering work.
- Hyaluronan acid binding by a human sperm indicates cellular maturity, viability and unreacted acrosomal status.
- "Significant relationship between HBA and DFI as well as sperm morphology." -Dr. William E. Roudebush et al.
- The newest innovation in andrology.
- Fertility & Sterility Vol.84, No.6, December 2005. "Intracytoplasmic Sperm Injection: a novel selection method for sperm with normal frequency of chromosomal aneuploidies", Atilla Jakab et al.